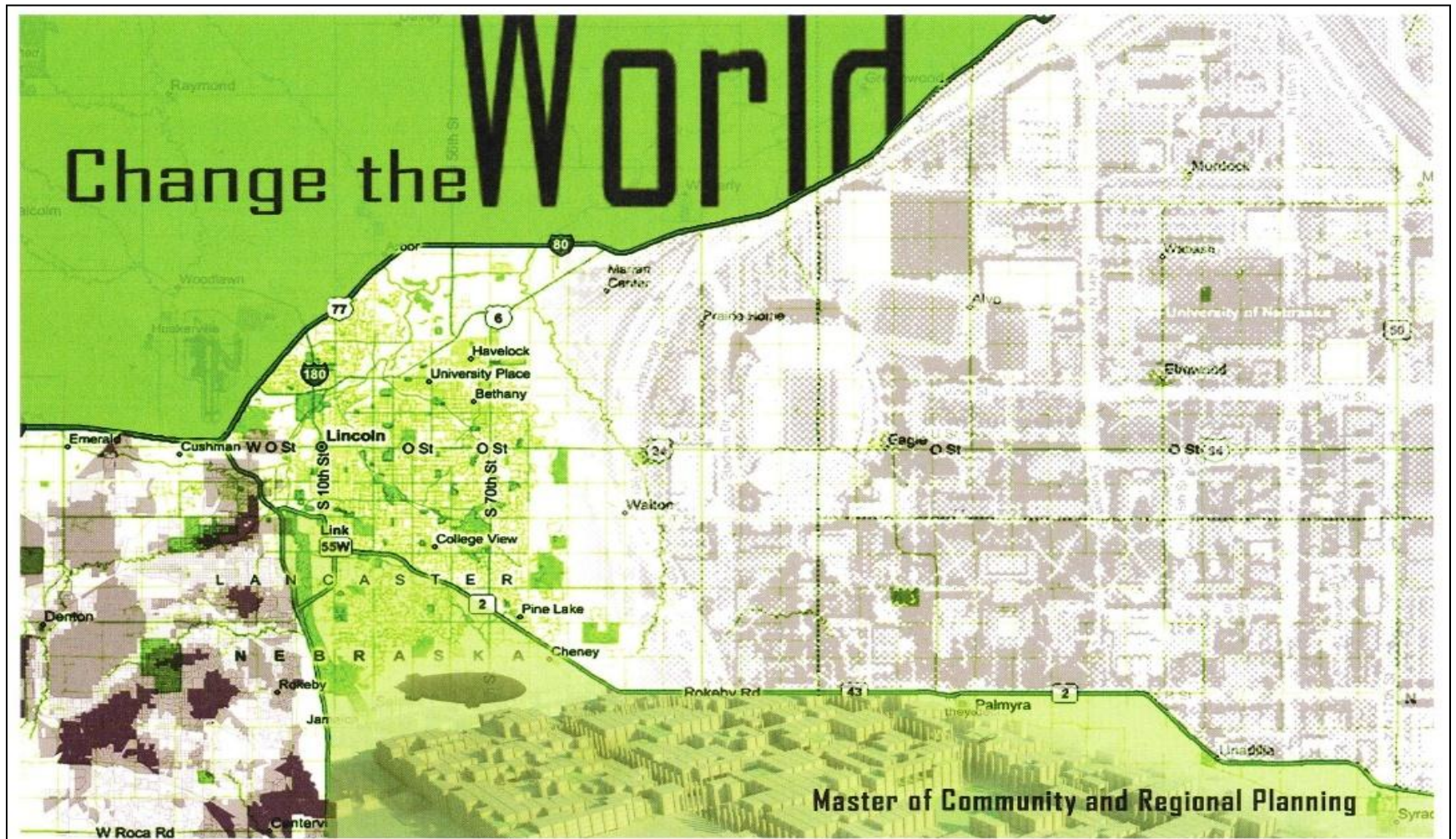


Master of Community and Regional Planning (MCRP) at the University of Nebraska–Lincoln

<http://planning.unl.edu/>



What is Planning?

- Do you think about the future?
 - About what could be rather than about **what is?**
- **Planning** is a dynamic profession that works to improve the welfare of people and their communities by creating more convenient, equitable, healthful, efficient, and attractive places for present and future generations.
- **Planners** develop long- and short-term plans for the use of land and the growth and revitalization of urban, suburban, and rural communities and regions.

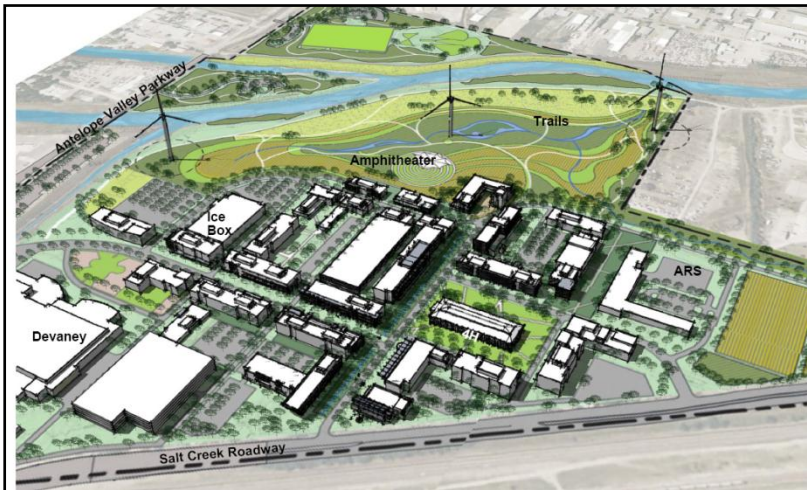
(from American Planning Association and the U.S. Bureau of Labor Statistics)



MCRP students collaborate on class projects.

What do planners do?

- Land Use Planning
- Environmental Planning
- Economic Development Planning
- Transportation Planning
- Housing and Community Development



- Urban Design
- Human Services Planning
- Historic Preservation
- Public Health
- Labor Force Development



The MCRP program includes learning computer applications for planning.

2010 Median Annual Earnings Of Urban and Regional Planners

- Planners in Architectural and Engineering Services: **\$68,240**
- Planners in Other Consulting Services: **\$66,280**
- Planners in State Government: **\$63,480**
- Planners in Local Government: **\$61,050**



The U.S. Bureau of Labor Statistics projects that employment of urban and regional planners is expected to grow 16 percent from 2010 to 2020, about as fast as the average for all occupations.

Source: U.S. Bureau of Labor Statistics, <http://www.bls.gov/oco/ocos057.htm>

Master of Community and Regional Planning (MCRP) at the University of Nebraska–Lincoln

- A program **nationally-accredited by the Planning Accreditation Board** for 30+ years
- Interdisciplinary program
- Diverse student body
- Active communications among faculty and students
- Night classes to accommodate non-traditional students



Teamwork is an important aspect of a planner's work and is an integral part of the MCRP program.

MCRP Degree Coursework Requirements

- **48 credit hours (total)**
- **24** credit hours of required core courses
- **24** credit hours in a completion track that includes electives tailored to meet your educational and professional goals

MCRP Core Courses

- Introduction to Planning
- Planning Theory
- Legal Aspects of Planning
- Qualitative Techniques
- Planning with GIS
- Planning Methods and Analysis
- Professional Planning Practice
- Planning Studio

Example Areas of Study in Planning



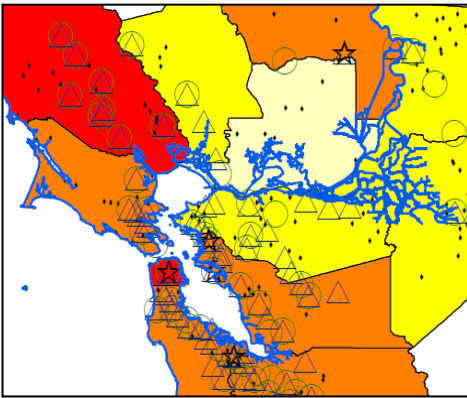
Historic Preservation Planning



Land Use Planning



Community Walkability & Transportation Planning



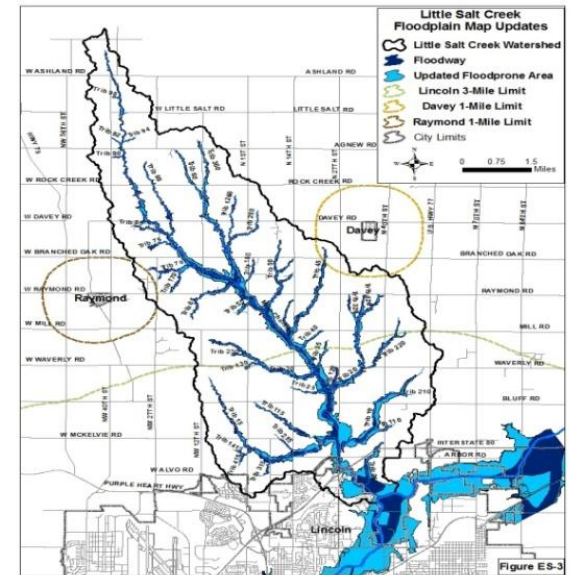
Hazard Mitigation Planning



Social Planning



Urban Design



Habitat Conservation Planning

Do you have further questions about Planning?

- **Master of Community and Regional Planning at UNL**
<http://planning.unl.edu>
- **American Planning Association (APA)**
www.planning.org
- **Association of Collegiate Schools of Planning (ACSP)**
www.acsp.org
- **Planners Network**
www.plannersnetwork.org
- **U.S. Bureau of Labor Statistics**
<http://www.bls.gov/oco/pdf/ocos057.pdf>

How to Apply for Admission to the MCRP Program

- ***Application Procedures:***

<http://planning.unl.edu/Application/Application.shtml>

- ***Application Deadline:***

Applications are accepted on a rolling, continuing basis. Students may be accepted for admission in the fall, spring, or summer sessions. For priority consideration for financial assistance, applicants are urged to submit completed applications by March 1 for fall semester admission and November 1 for spring semester admission.



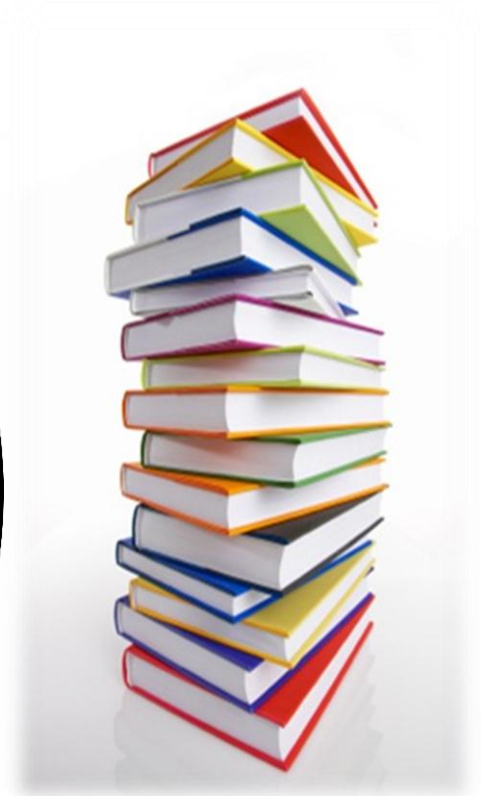
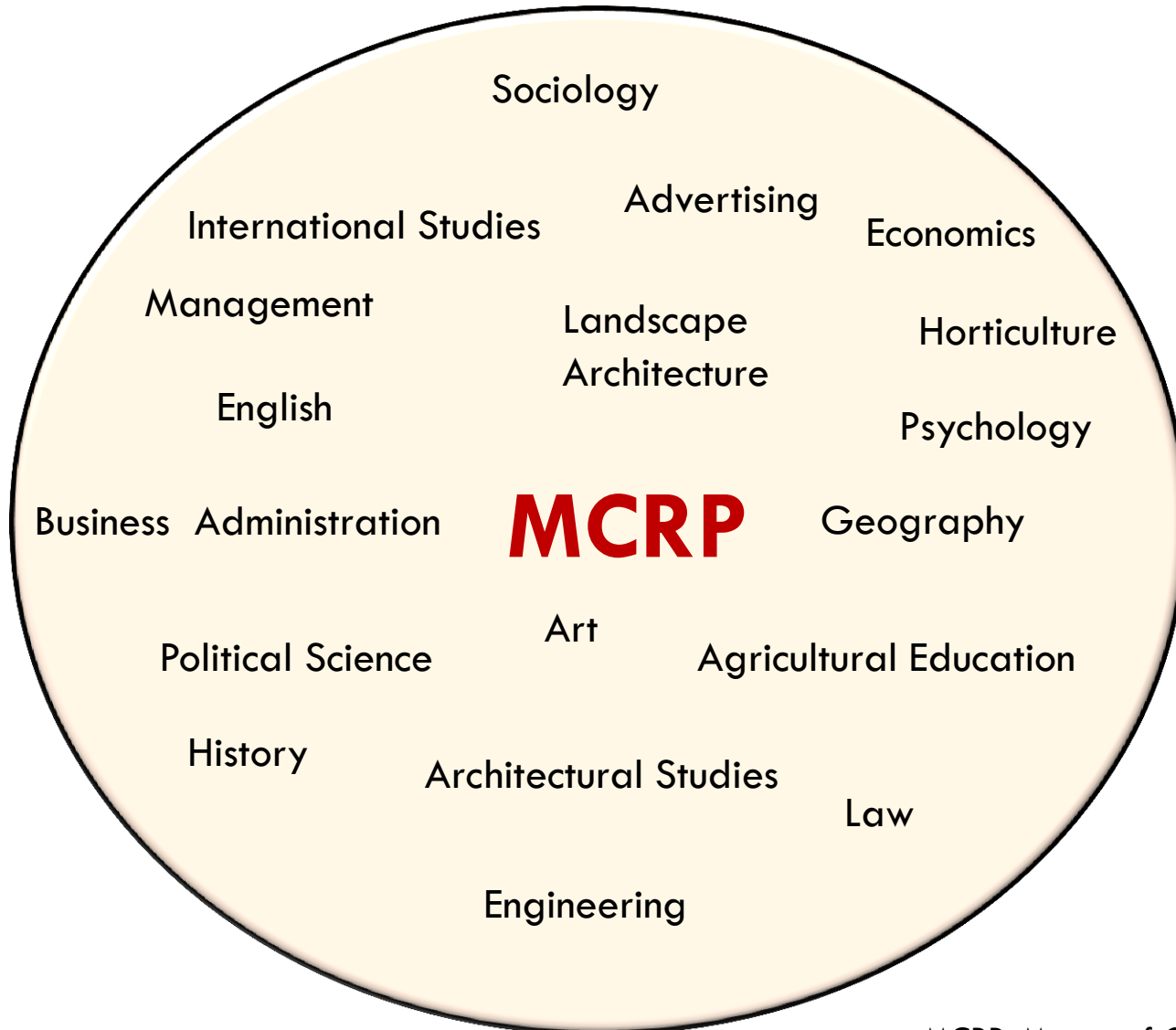
MCRP students with diverse backgrounds work together in interdisciplinary teams.

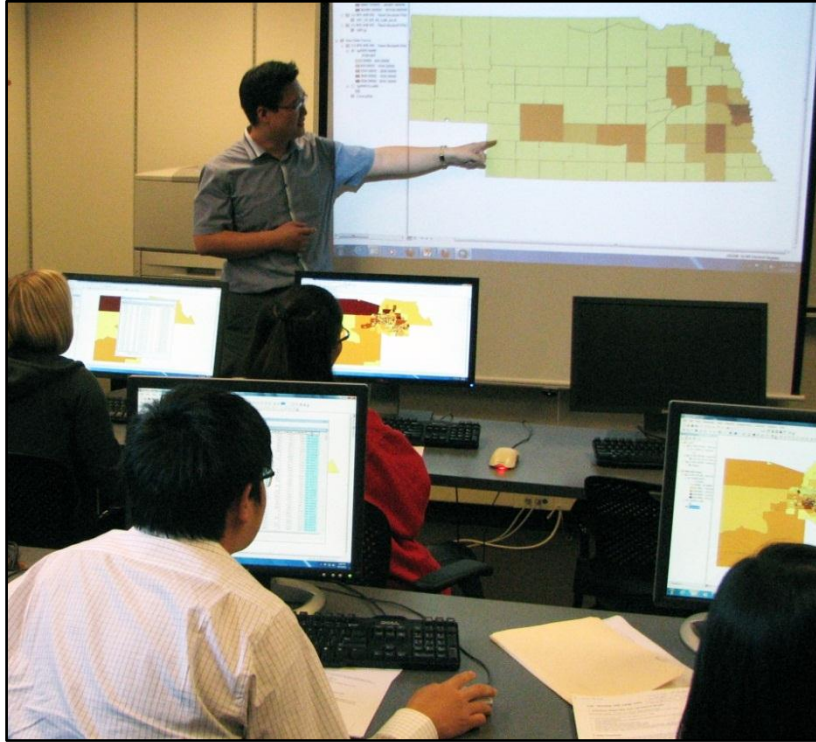
Submit Your Application

<http://planning.unl.edu/Application/Application.shtml>

1. **Graduate Studies application** (online via the [Graduate Studies website](#))
2. **A \$50 application fee**
3. **Supporting files** (statement of educational and professional goals and a résumé)
4. **Official transcripts** for all undergraduate and graduate study
5. **Three letters of recommendation** submitted via [GAMES](#)
6. **TOEFL scores** (results from an English proficiency exam required from all international student applicants)
7. **Financial certification** (international students only)
8. **GRE scores** (recommended; not required)

The MCRP program attracts students with a wide variety of undergraduate majors—





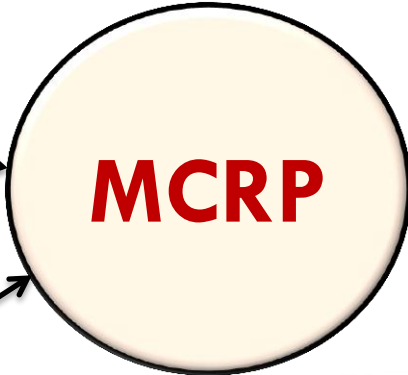
Students in the MCRP program learn how a Geographic Information System (GIS) is used to depict important community and regional characteristics and thereby function as a powerful analytical tool for planning.

MCRP program's diverse student body—



Nebraska and Great Plains

- Nebraska
- Kansas
- South Dakota
- Etc.



Other States in U.S.

- Maryland
- Idaho
- Colorado
- Michigan
- California
- Etc.



From across the World:

- Nepal
- Japan
- Korea
- China
- Zambia
- India
- Etc.





Where our graduates are employed

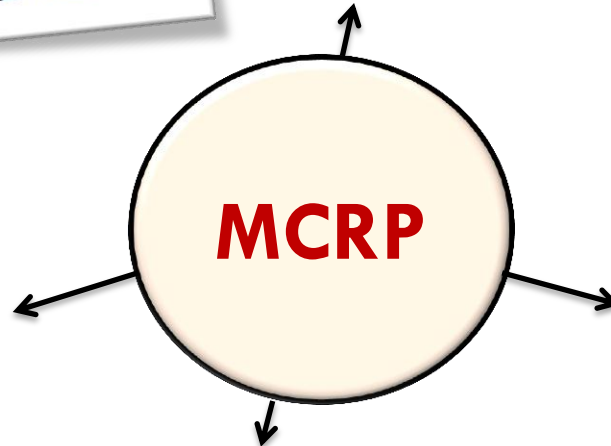


Local Governments:

- Lincoln and Omaha, NE
- Hall County, NE
- Denver, CO
- Colorado Springs, CO
- Anaheim, CA
- Oceanside, CA
- Council Bluffs, IA
- Highlands County, FL
- Lawrence, KS
- Kansas City, KS
- North Myrtle Beach, SC
- Etc.

State & Federal Government

- Nebraska Department of Economic Development
- Nebraska Department of Health and Human Services
- Nebraska Game & Parks Commission
- U.S. Department of Housing and Urban Development
- U.S. Department of the Interior



Consulting Firms

- Hanna: Keelan Associates
- HDR
- Bucher Willis Ratliff Corp.
- JEO Consulting Group
- Civil Design Group
- Etc.

Non-profit & International Organizations

- Heritage Nebraska Main Street
- Nebraska Community Foundation
- University of Nebraska
- Lincoln Action Program
- Kansas State University
- University of Missouri
- Japan Ministry of Construction
- Many other countries



The MCRP program
Includes fieldwork and
hands-on work with
community groups.



Questions?



Gordon Scholz, AICP, AIA

Professor

Community and Regional Planning

College of Architecture

304 Architecture Hall

University of Nebraska–Lincoln

Lincoln, Nebraska 68588-0105

Phone: 402.472.9284

Email: gscholz@unl.edu

Jenna Hilligoss

Graduate Programs

Admissions Coordinator

College of Architecture

232 Architecture Hall

University of Nebraska–Lincoln

Lincoln, Nebraska 68588-0106

Phone: 402.472.9229

Email: jenna.hilligoss@unl.edu

For more information, please visit: <http://planning.unl.edu/>